

QUALITROL® 038

Gas accumulation indicator



Monitor accumulation of dangerous gases in your transformer

- Integrated port for collecting gas samples for analysis
- Corrosion resistant materials provide a long service life
- Angled dial face for easy viewing

Product Summary

Description Mechanical measurement of gas accumulation within a conservator style transformer. Alarm functions warn when level hits maximum limit and remains on until sufficient gas is removed. Sampling port allows your personnel to draw-off of gas for laboratory analysis.

Application For monitoring and controlling the gas accumulation in a conservator style transformer. Offers control options, alarm triggering and sampling of gas in tank.



QUALITROL®
Defining Reliability

QUALITROL® 038 gas accumulation indicator

Monitor accumulation of dangerous gases in your transformer

- Provides continuous indication of the total accumulated gases
- An SPDT switch built into the gage case actuates when the accumulated gas displaces greater than 200cc of oil, triggering a latching alarm that will remain on until sufficient gas is removed

Integrated port for collecting gas samples for analysis

- Gas can be drawn off from the accumulator for analysis via the integrated sampling port
- Optional "Sampling Valve Kit" (VLV-602-1) allows the samples to be drawn off more easily at the bottom of the tank
- Optional "Sampling Syringe Kit" (KIT-005-1) provides useful tools and hardware to take measured samples of gas

Corrosion resistant materials provide a long service life

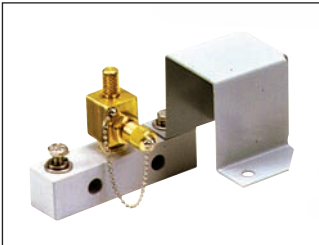
- Aluminum case and flange are finished with a thermosetting powder-coat
- Stainless steel hardware, cup and bezel and UV stabilized polycarbonate lens for maximum durability

Angled dial face for easy viewing

- Dial face is set at a 15° angle for easy view from the base of the transformer
- Large 6" (152.5 mm) dial face can be customized to maximize readability for the application

Components and accessories

Sampling valve assembly



- The Sampling Valve Assembly (VLV-602-1) is attached to piping from the Gas Accumulation Indicator and is mounted on the side of the transformer tank at ground level. The components, the manifold, shut-off valve and male stopcock are covered by a shield. This shield which protects the parts and identifies the assembly, is removed when gas samples are drawn and should be replaced when the procedure is completed. The Sampling Valve Assembly can be ordered separately or in conjunction with the Gas Accumulation Indicator

Sampling syringe kit



- The Sampling Syringe Kit (KIT-005-1) consists of three syringes, a male stopcock and a flame check filter. A syringe and the stopcock are used to draw gas samples for analysis. With the flame check filter, these same parts can dispense a gas sample for combustibility testing
- Three syringes are supplied to facilitate the drawing of multiple gas samples
- The Sampling Syringe Kit is available by itself or along with other Gas Accumulation indicator accessories



TECHNICAL SPECIFICATIONS

Mechanical	Weight	11.00 lbs (5 kg)
	Mounting	2- 5/8 X 1.5" LG bolts or studs on 4.25" centers Unit must be mounted on a horizontal plane
	Standard dial ranges	0 - 450 CC (cubic centimeters)
	Case	Sealed or vented , meets IP54
	Tank connection	3/8"-18 NPT (standard)
	Sampling valve connection	1/4"-18 NPT, or through use of optional VLV-602-2 sampling valve
Dimensions	Dial diameter	6.00" (152 mm)
Materials	Case	Die-cast aluminum, ASA #70 light grey thermosetting powder coat finish
	Bezel	Stainless steel (standard)
	Cup	Stainless steel (standard).
	Lens	Glass, tempered glass or UV stabilized polycarbonate
	Flange	Aluminum, painted ASA #70 gray per FS-102
	Float	Nitrophyl
Environmental	Std. operating temperatures	-40 to +176°F (-40 to +80°C.)
	Ambient humidity	35% to 100%
Electrical	Connection type	QUALITROL, military, or ANSI standard quick disconnect connector
	Switch type	Snap action - SPDT
	Switch rating (AC)	15 amp @ 125, 250 & 480 VAC, resistive
	Inductive P.F.	72%
	Switch rating (DC)	1/2 Amp @ 125 VDC - resistive
		1/4 Amp @ 250 VDC - resistive
	Indicating accuracy	±2°C
	Switching accuracy	±2°C
	Dielectric strength	1500 VAC for one minute

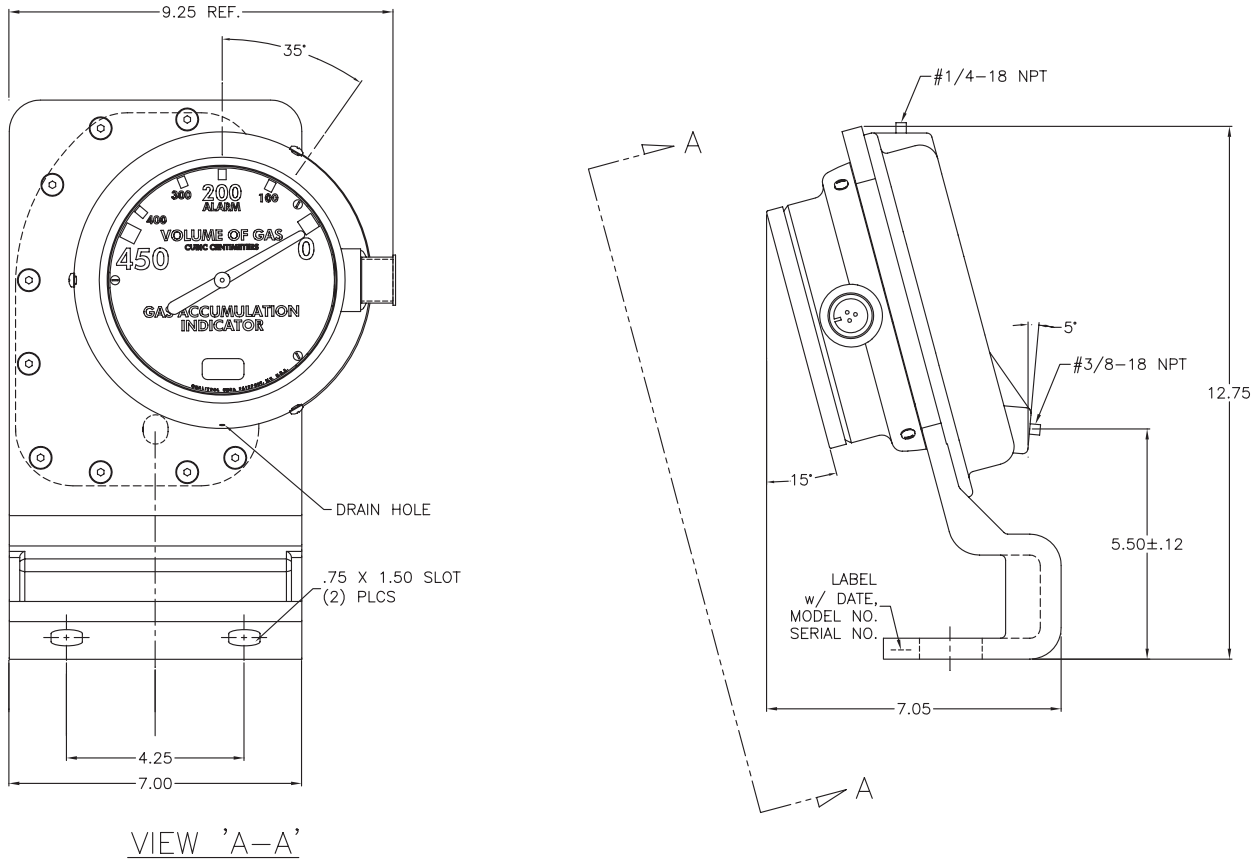


Don't see what you need?

QUALITROL regularly creates models with special customer requirements. Contact your local sales representative or QUALITROL Application Engineer to review your special requirements.



QUALITROL® 038 gas accumulation indicator



QUALITROL® Field Services

To further improve reliability, QUALITROL provides comprehensive education and on-site commissioning services, maintenance contracts and technical support to all customers worldwide. Emergency response is available on all products and services.

About QUALITROL®

QUALITROL Company LLC manufactures substation and transformer monitoring and protection devices used by electric utilities and manufacturing companies. It is the global leader in sales and installations of transformer asset protection equipment, fault recorders and fault locators. Established in 1945, QUALITROL Company produces thousands of different types of products on demand, each customized to customers' unique requirements.

©2008 QUALITROL® Company LLC, an ISO 9001 system certified company. All rights reserved. Information subject to change without notice. All trademarks are properties of their respective companies, as noted herein. AP-C11-01A-01E.